

# OBMG

Integrated Electrical Solutions



---

**SPECIALISTS IN INTEGRATED ELECTRICAL SOLUTIONS  
& ELECTRONIC PRODUCT SUPPLY**

---

[www.obmghk.com](http://www.obmghk.com)

---

# OBMG OVERVIEW

---

## OUR STORY

On Board Marine Group Ltd (OBMG) is a Hong Kong based company providing professional electrical solutions and distribution of electrical products to the marine, mobile, transport and industrial markets.

Originally founded in 2010 to service Asia's recreational marine market. OBMG has grown rapidly to meet the increasing demand from its clients, Asia's leading commercial and recreational shipyards, yacht brokerages, racing yacht teams, specialty vehicle manufacturers and government departments.

OBMG employs an international team of electrical and electronic engineering and sales experts. OBMG is a multinational company with staff members from Hong Kong, United Kingdom, New Zealand, South Africa and Australia with a combined knowledge of 100+ years experience in the industry.

## CAPABILITIES

OBMG's experienced team can provide a custom solution to meet your requirements.

- In-House Design & Engineering Team
- Technical Service & Support Team
- Sales & Marketing Team

From system design and product supply to a complete turnkey package.

- Electrical Systems & Engineering Design
- Custom Part Manufacture / Product Supply
- On / Off Site Installation & Service
- Project Management & System Commissioning
- After Sales Support

## OBMG TEAM



OBMG DESIGNS AND DELIVERS SYSTEMS BUILT ON TECHNOLOGY, INTEGRITY AND REALIABILITY OF **INDUSTRY LEADING BRANDS.**

## PRODUCT DISTRIBUTION

### SUPPLY B2B / OEM

OBMG works with manufacturers and OEM clients to provide products and solutions to meet individual client requirements.

Whether it be a completely new system or integrating the latest technologies into an existing system.

OBMG designs and delivers cost effective solutions built with industry leading brands.

### RETAIL & DEALER NETWORK

OBMG has established a dealer network for retail, B2B and OEM customers across Asia & the Middle East for selected brands.

### ONLINE STORES

OBMG provides technical knowledge and product supply to a global customer base through 3 e-commerce platforms.

[www.obmgonline.com](http://www.obmgonline.com)  
[www.czoneonline.com](http://www.czoneonline.com)  
[www.oceanledasia.com](http://www.oceanledasia.com)

Enabling customers to order and make payment in real time for international delivery. In turn increasing efficiencies and reducing lead times.

OBMG REPRESENTS OVER 39 OF **THE INDUSTRY'S LEADING BRANDS**



---

# SERVICES

## ELECTRICAL DESIGN

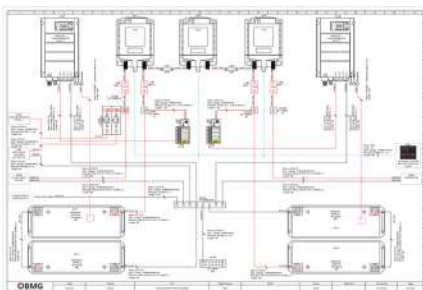
---

### ELECTRICAL DESIGN

#### *Full Electrical System Design*

Electrical systems design is a critical part of the production process.

A clear and accurate design package will allow the manufacturer to produce a repeatable, reliable and serviceable system. OBMG can offer system design from concept through to completion.

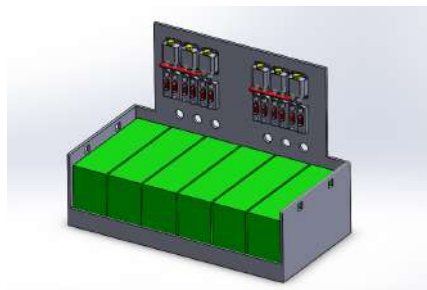


### GENERAL DRAWINGS & DESIGNS

#### *Electrical System Drawings*

OBMG offers electrical system drawings of various types based on project requirements, including:

- System Concepts Drawings
- Electrical Schematic Drawings
- Single & Multi Line Diagrams
- Layout & Mechanical Drawings



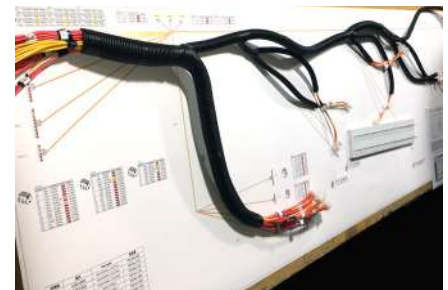
### 2D & 3D DESIGN

#### *Computer Aided Design*

OBMG offers computer aided design services for electrical systems planning.

Computer modelled system layouts ensure correct cable and product placement.

Accurate designs reduce wastage, improve efficiency and increase profitability.



### WIRING HARNESS / LOOMS

#### *Prefabricated "Plug & Play" Looms*

For production builders OBMG can design and supply prefabricated wiring looms to reduce production times and labour costs.

Prefabricated and tested wiring looms provide a plug and play solution by reducing the complexity of the installation process and reducing future system failures.



# SERVICES

## OEM SUPPLY

### PRODUCT SUPPLY

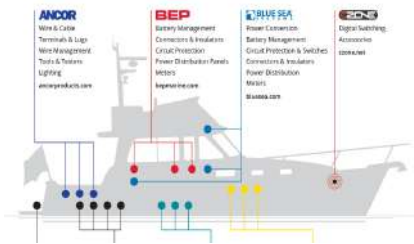
#### *B2B & OEM*

OBMG distributes over 39 of the industry's leading brands to the marine, mobile and industrial markets.

OBMG is able to supply and support all levels of customer from end user, trade customers and OEM level manufactures.



Providing more than products. Providing Solutions.



### EXPERT PRODUCT KNOWLEDGE

#### *Integrated Electrical Solutions*

OBMG's team of internationally qualified engineers and technicians are trained on the brands and products we represent.

Enabling our staff to design and deliver fully integrated electrical solutions for the most demanding applications and environments.



### PRODUCT SOURCING

#### *39+ Brands & Over 20,000+ Products*

OBMG distributes over 39 industry leading brands and can supply over 20,000 products.

OBMG can source or manufacture custom parts in order to provide a turn key solution.



### CONSOLIDATION OF GOODS

#### *Order Consolidation, Storage & Shipping*

OBMG is able to supply systems comprised of products from a number of different global manufacturers.

Multiple orders can be consolidated into a single shipment to increase efficiency and reduce costs for the customer.

---

# SERVICES

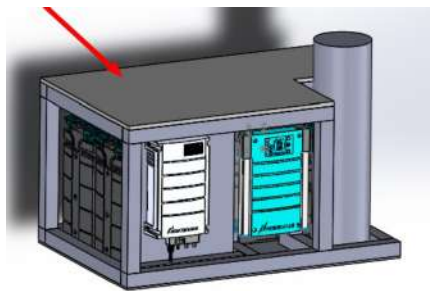
## OEM SUPPORT

---

### OEM SUPPORT

#### *Installation & Service*

OBMG's in-house team of internationally qualified engineers and technicians are on hand to install, service and maintain our integrated electrical solutions.



### CONCEPT CREATION

#### *Creation Through To Design*

OBMG's design and engineering team can partner with clients to develop custom solutions to match individual project requirements.

We can offer a comprehensive design service from concept through to final system design, supply and installation.



### ON-SITE PROJECT SUPPORT

#### *Support, Training & Commissioning*

OBMG is able to provide on-site support to ensure the efficient completion of projects.

Support can be provided through staff training, on-site project management and system sign off and commissioning.



### AFTER SALES SUPPORT

#### *Technical Support, Warranty & Repair*

OBMG acts as a service point for all major brands that we represent.

Supporting a wide range of customers from the marine, mobile and industrial markets for after sales and warranty requirements.

---

# OBMG SOLUTIONS PROVIDER

---

## CAPABILITIES

**Our Expertise Include:**

- Electrical DC / AC Power Distribution
- PLC, Canbus & Digital Control & Monitoring Systems
- Systems Fault Finding & Repair
- Shore Power & Shore Power Conversion
- Integrated Alarm & Monitoring Systems
- Switchboard Design & Manufacture
- Lighting Design & Control
- Integrated Navigation System Design & Installation
- UPS / Power Supply, Storage & Conversion
- Lithium Ion, Gel & AGM Battery Systems
- Air Conditioning & Refrigeration Systems
- Marine & Automotive Diesel Generator Installations, Maintenance & Repair
- Marine Electric Propulsion
- Solar Power, Wind Power & Hydro Generators
- Audio System Design & Installation
- Communications & Data Systems, Fleet Broadband, VSAT, Satellite Communications, VHF, AIS, SSB, 4G, Cellular & Wi-Fi
- Marine Satellite TV



---

## RECREATIONAL MARINE PROJECTS

---

### **BANUS 60 - DRAGON**

*Built at McConaghy Boats, Zhuhai*

OBMG designed supplied and installed all electrical and electronics systems on-board hull 1 MACH 2 and hull 2 Dragon of the custom 60 foot Banuls catamarans built at McConaghys Boats in Zhuhai China.

Dragon was the winner of the 2019 Multihull Cup, Port Adriano, Mallorca.



### **AQUILA - A32**

*Luxury Production Catamaran*

OBMG provided the yacht builder with a full electrical design and supply package. Including electrical harness design for mass production, on-site support and training.

The design features Mastervolt lithium ion house batteries to enable air-con to run overnight without a generator.



### **KRAKEN 50**

*Blue Water Cruiser*

OBMG designed and supplied a custom electrical solution for AC & DC power distribution, navigation electronics, alarms and monitoring for the new production model of the Kraken 50.

The Kraken 50 was awarded the Best Bluewater Cruiser of 2018 in the British Yachting Awards.



### **MY ISSUE**

*Moonen Built - 89ft - Systems Refit*

OBMG was commissioned to carry out a full system refit of the navigation and communication systems on-board the pleasure vessel MY Issue.

A full systems package of Simrad glass bridge navigation, dual radars, FLIR thermal camera, CCTV & communications were supplied and fitted to the vessel.



*Photo: FINN N53 Trimaran  
- Renaud Banuls Design -  
Built By McConaghy Boats*



## **N53 TRIMARAN**

OBMG designed, supplied and installed all on board electrical and electronic systems for the Renaud Banuls designed N53 Trimaran built at McConaghy Boats in Zhuhai China.

The Yacht is designed as a fast cruiser.

Due to the high performance pedigree CZone digital switching and Mastervolt

Lithium Ion batteries were used to provide a high tech and light weight system.

CZone digital switching system was used throughout to create a comprehensive alarms and control package.

Lithium ion batteries were used for engine start, house battery and bow thruster systems.



---

## COMMERCIAL MARINE PROJECTS

---

### AMERICA'S CUP ACRM

#### *Electrical Design, Supply & Support*

OBMG was contracted by The America's Cup Race Management for the electrical design for six purpose built 13 meter Mark Boats.

Designed specifically for the America's Cup Race Management, this VIP-spectator vessel also functioned as a course marker using DGPS for accurate course keeping.



### MACAU MARINE POLICE

#### *Government Police & Patrol Vessel*

OBMG designed and supplied electrical systems for Macau Marine Police's new 6.5m patrol vessels.

Systems included Simrad navigation, Hella Marine LED lighting solutions, police siren, PA system and communications.



### MACAU SEARCH & RESCUE

#### *Government Fire & Rescue Vessel*

OBMG supplied thermal imaging FLIR cameras for the newly launched Macau Fire & Rescue vessel.

This technology enables quick detection of personnel in the water to allow for more efficient search and rescue operations.



### ANTI PIRACY VESSELS

#### *Ex Hong Kong Marine Police Fleet Refit*

OBMG was commissioned to carry out the refit of 16 ex Hong Kong marine police 26m vessels. The vessels were repurposed for the use of anti piracy countermeasures in the oil and gas industry off the Nigerian Coast.

OBMG supplied Simrad navigation and communications packages.



Photo: M/Y SuRi - 208'  
Expedition Vessel



## M/Y SURI

OBMG supplied and installed new switchboards and power distribution systems on board MY Suri - 208' Expedition Vessel.

A total 15 HVAC stainless steel switchboards were prefabricated off-site to provide a superyacht grade solution that is safe and easily accessible for operation and maintenance. The switchboards were

shipped to the vessel and fitted between charters to minimise the vessels down time.

The project was completed in 2 stages in Thailand and Indonesia.



---

## SPECIALTY VEHICLES MOBILE SOLUTIONS

---

### AUTONOMOUS POWER

#### *Electrical Design, Supply, Install & Support*

OBMG can design and deliver autonomous power systems for mobile applications.

Systems can be charged by the vehicles engine or by grid power.

The systems allows for DC and AC power in stand-alone operation at any location.



### CONTROL & MONITORING SYSTEMS

#### *Specialty Vehicle Monitoring & Control*

OBMG can design and supply turn key solutions for the vehicles systems control and monitoring.

We can provide control by conventional switching or via digital control over a data network.

We are able to monitor all the vehicles critical systems to ensure the operator is in full control at all times.







## SPECIALTY VEHICLE & MOBILE OVERVIEW

As a leading supplier of innovative and niche electrical products and systems, we provide our customers with the best solutions for their electrical applications and power management requirements.

Whether a promotional truck, emergency vehicle, RV, surveillance vehicle or food truck we can provide the right solution for your most demanding mobile applications.

With our design and engineering team and our combined brands offering, we can provide our clients the convenience of a one-stop shop solution provider for all automotive, electrical component and system requirements.



---

## INDUSTRIAL APPLICATIONS PROJECTS

---

### HONG KONG MTR TUNNEL LIGHTING

#### *Custom LED Lighting Tunnel Boring Machine Solution*

OBMG provided a custom lighting solution using Hella Marine AS5000 LED lamps, custom power supplies and custom magnet bases that allowed the lights to be placed anywhere and at any angle on the tunnel boring machine.

The reliability of the lights made for a safe and efficient cutter change maximising the running time of the TBM and the safety of the workers.



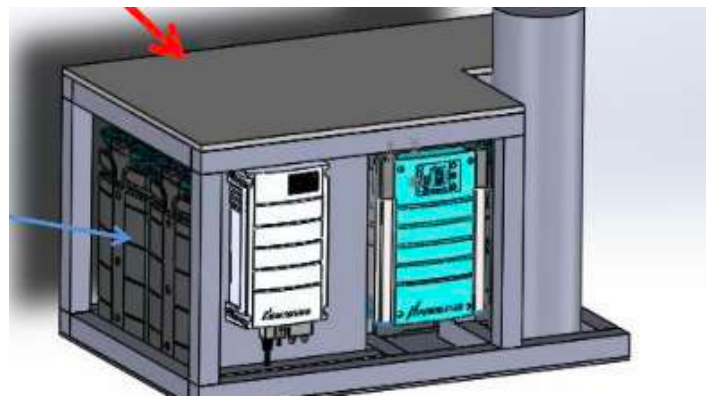
### INDEPENDENT SCHOOL FOUNDATION ACADEMY

#### *Standalone Power Supply For Air Pollution Detection System*

OBMG design and supplied a custom Mastervolt lithium ion power supply for an air pollution monitoring station.

A combination of Mastervolt lithium ion batteries and inverter provides a clean stand alone power source for highly sensitive monitoring equipment without the need for a generator.

The unit can be placed in any location without the need for an additional power source.







## REDFIN - XIÁN RETAIL COMPLEX CYLINDER AQUARIUMS

OBMG was commissioned by Redfin Aquariums to provide a control and monitoring solution for their latest retail aquarium project in Xián, China.

A touch screen display enabled Redfin technicians to closely monitor and control a number of different critical systems across two tanks.

Accurate monitoring and alarms are essential to maintaining the correct environment for any aquatic life.

Systems included:

- Pumps & Tank Levels
- UV Sterilisers
- Reverse Osmosis Systems
- Water Filtration
- Alarms & Monitoring



## OBMG REPRESENTS OVER 39 OF THE INDUSTRY'S LEADING BRANDS

**MASTERVOLT**  
THE POWER TO BE INDEPENDENT

**CZONE**

**BEP**

**BLUE SEA**  
SYSTEMS

**MARINCO**

**ProMariner**™

**ANCOR**

**LENCO**

**tricab**

watt&sea

**LARS**  
**Thrane**  
communication systems

**SIMRAD**

**LOWRANCE**

**B&G**

**wassp**  
MULTIBEAM

ECHOPILOT

**MAP**

vespermarine

**NAVIO**

peplink

**KVHI**

**FLIR**

**Actisense**  
Award Winning NMEA Specialists

**Maretron**

**pacific**  
aerials

**SCANSTRUT**

**Fischer Panda**

**SUNWARE**

**Hella marine**  
Vision and Innovation

**OceanLED**

**FUSION**

**frigobeat**

**CLIMMA**  
MARINE AIR CONDITIONING

**SPECTRA**  
WATER MAKERS

**TORQUEDO**  
Dealer Partner for Marine Special Projects

**Bellmarine**  
powered by Transfluid

**TRANSFLUID**  
industrial & marine

**UltraMarine**  
Leader in Innovation

**SCAN**  
ANTENNA



# BRANDS

---

Power Solutions	<b>MASTERVOLT</b>	18
Digital Control & Monitoring	<b>GZONE</b>	19
Electrical Protection Solutions	<b>BEP</b>	20
Electrical Solutions	<b>BLUE SEA SYSTEMS</b>	21
Electrical Accessories	<b>MARINCO</b>	22
Waterproof Battery Chargers	<b>PROMARINER</b>	23
Wire & Wire Management	<b>ANCOR</b>	24
Trim Tabs & Actuators	<b>LENCO</b>	25
Marine & Amoured Cable	<b>TRICAB</b>	25
Hydrogenerators	<b>WATT&amp;SEA</b>	26
Satellite Communications	<b>LARS &amp; THRANE</b>	26
Power Boat Navigation & Electronics	<b>SIMRAD</b>	27
Fishing Navigation & Electronics	<b>LOWRANCE</b>	28
Sailing Navigation & Electronics	<b>B&amp;G</b>	29
Multibeam Sounder	<b>WASSP MULTIBEAM</b>	30
Forward Looking Sonar	<b>ECHAPILOT</b>	30
Digital Charts	<b>C-MAP</b>	31
SmartAIS	<b>VESPERMARINE</b>	31
Vessel Monitoring & Control	<b>NAVIOP</b>	32
On Board Networking Solutions	<b>PEPLINK</b>	32
Satellite Communications	<b>KVH</b>	33
Thermal Imaging Systems	<b>FLIR</b>	34
NMEA Network & Vessel Monitoring	<b>ACTISENSE</b>	35
Vessel Monitoring & Control Systems	<b>MARETRON</b>	35
Marine, Land & Data Antennas	<b>PACIFIC AERIALS</b>	36
VHF, 3G, 4G & 5G Antennas	<b>SCAN ANTENNA</b>	36
Mounting Solutions	<b>SCANSTRUT</b>	37
Marine Generators	<b>FISCHER PANDA</b>	38
Solar Panels & Regulators	<b>SUNWARE</b>	39
LED Lighting	<b>HELLA MARINE</b>	40
Underwater LED Lighting	<b>OCEANLED</b>	41
Marine Entertainment	<b>FUSION</b>	42
Marine Refrigeration	<b>FRIGOBOAT</b>	43
Marine Air Conditioning	<b>CLIMMA</b>	43
Marine Watermakers	<b>SPECTRA</b>	44
Electric Propulsion Motors	<b>TORQEEDO</b>	45
Electric & Hybrid Propulsion	<b>BELLMARINE</b>	46
Transmission & Components	<b>TRANSFLUID</b>	46
Stainless Steel Anchors	<b>ULTRA MARINE</b>	47

## INNOVATIVE POWER SYSTEMS

### *For Autonomous Use*

Mastervolt stands for reliable and innovative autonomous power solutions.

Specialists in the management, conversion and storage of electrical energy for demanding markets such as marine, mobile, off shore, industrial, autonomous solar and infrastructure.



## BATTERIES

### *Lithium Ion, AGM & GEL Batteries*

Powerful, robustly constructed batteries are the key.

Mastervolt offers several battery technologies, all designed for optimal performance, reliability and longevity in harsh environments.



## CHARGERS & INVERTERS

### *Chargers, Sine Wave Inverters & Combi's*

Mastervolt's power conversion products offer cutting-edge technology, quality and reliability.

Whether using a microwave, LCD TV, coffee maker, cell phone charger, entertainment system or more, Mastervolt's electrical products power the comforts of home.



## DC-DC CONVERTERS

### *Stable Power Supply*

- Professional use.
- Converter and 3-step battery charger.
- Parallel switchable.
- Adjustable and programmable output voltage.
- Voltage stabilisation for a longer lifespan.
- Dimmer function for Mac & Magic models.
- Mac Plus: optimal charging in Euro 5/6 applications.



# DIGITAL CONTROL & MONITORING

## CZONE

### DIGITAL SWITCHING

#### *Digital Control & Monitoring*

CZone Control and Monitoring simplifies installation of electrical systems through the replacement of complicated and often cumbersome traditional wiring.

CZone is perfect for Marine and Mobile Automotive applications and replaces switch and fuse panels with networked digital switch interfaces providing ultimate control of on board electrical systems.



### DISPLAYS & KEYPADS

#### *Digital Switching & Control*

CZone displays are the interface between the CZone network and the user.

Both touch screens and keypads offer full control of circuits as well as the ability to view important on board system information, such as tank levels and power levels (for both AC and DC supplies).

### DC & AC INTERFACES

#### *Control, Monitoring & Protection*

Circuit control and monitoring modules to interface the CZone network with traditional mechanical switches and external sensors and meters.

Output interfaces provide an intelligent replacement for traditional circuit breaker and fuse panels.

### NETWORK INTERFACES

#### *Wireless, NMEA 2000 & Masterbus*

Digital switching interface modules are designed to connect your tablet to the CZone or Mastervolt digital switching system.



# ELECTRICAL PROTECTION SOLUTIONS

**BEP**

## ELECTRICAL SOLUTIONS

### *Designed To Withstand Harsh Conditions*

BEP engineers and manufactures a range of high quality electrical solutions designed for the harsh Marine and RV environments.

Every product it makes meets exacting performance specifications and is designed to withstand extreme conditions both at sea, and on land.



## BATTERY MANAGEMENT

### *Switches, Relays & Distribution*

Battery Management is central to the safe operation of a boat.

All boats and vehicles with an engine have at least one battery whose primary purpose is starting the engine and providing power for loads such as lights, pumps, and electronics.



## CIRCUIT PROTECTION

### *Bus Bars, Fuse Holders & Circuit Breakers*

On board power demands continue to increase as boaters request the comforts of home on their boats.

BEP looked at the common products used by electrical installers every day and made significant improvements to their design and construction.



## PRO INSTALLER

### *Modular Assemblies*

Pro Installer modular assemblies are designed for fast, flexible installation in tight spaces, making it easy to “cluster” products and reduce their footprints.

Connect multiple Pro Installer products, ensuring the fastest installation and the most compact footprint.



## INNOVATIVE ELECTRICAL SYSTEMS

### *Blue Sea Systems - Built To Last*

Blue Sea Systems designs and manufactures AC and DC electrical products engineered to withstand the demanding applications in Marine and Specialized Vehicle electrical systems.

Products include battery chargers, battery switches, automatic charging relays, fuse blocks, busbars, meters, and both standard & custom power distribution panels.



## BATTERY MANAGEMENT

### *Manual & Remote Battery Switches*

Battery management is central to safe operation of a boat or vehicle.

Battery switches isolate the potentially destructive energy in the battery banks when the boat is not in use or during emergencies.

## CUSTOM SWITCH PANELS

### *Standard & Custom 360 Panels*

The 360 Panel System uses an open frame to mount a broad selection of modules, allowing multiple functions to be combined in a single panel.

This innovative design offers a wide choice of panel features, can accommodate future changes and permits rapid assembly.

## FUSE HOLDERS & FUSES

### *Circuit Breakers, Fuses & Fuse Holders*

Blue Sea Systems extensive selection of circuit breakers, fuses, fuse holders, and fuse blocks gives boaters a range of choices for main and branch circuit protection.

- Fuses
- Fuse Holders
- Ignition Protected Fuse Blocks

**ELECTRICAL ACCESSORIES**

*Stand Up To The Harshest Environments*

Marinco manufacture electrical products that stand up to the harshest environments.

Every product, from rugged shore power cordsets and adapters to a wide array of 12V accessories, is designed to withstand the rigors of life at sea.



**SHORE POWER**

*Designed For The Marine Environment*

- Adapters
- Cord Sets
- Inlets
- Outlets
- Plugs & Connectors
- Galvanic Isolators

**DC POWER CONNECTIONS**

*Socket & Plug Systems*

- 2-wire or 3-wire plugs
- Receptacles
- Cords
- Boots
- Mounting Plates & Brackets

**USB CHARGERS**

*12-24V Input, 5V Output & 2.1 Amps*

Dual USB charger, and combination Dual USB with 12V Receptacle.

Dual USB features two ports to charge cell phones, tablets and other devices powered by USB's, a blue LED to show that power is available, and a cover to prevent water and dirt from entering the ports.

---

# ProMariner

---

## MARINE & MOBILE BATTERY CHARGERS **PROMARINER**

### WATERPROOF BATTERY CHARGERS

#### *Cost-Effective Performance Charging*

With the broadest range of on-board charging products in the industry, ProMariner offers cost-effective and performance solutions for all boats whether its open water cruising, sailing, salt water sport fishing, recreational boating, or bass and walleye tournament fishing.



### WATERPROOF CHARGERS

#### *Waterproof On-Board Marine Battery*

Designed for long-lasting performance, ProMariner marine battery chargers deliver fast charge times and proven battery conditioning while eliminating the need to haul portable chargers onto your watercraft and offering protection from the elements.

### DRY MOUNT CHARGERS

#### *ProNauticP Dry Mount Battery Chargers*

Industry recognized with the 2010 IBEX Innovation Award, ProNauticP employs our Generation 3 ProMar Digital Performance Charging Platform which combines all digital control and software based power conversion technology with global energy management features.

### BATTERY ISOLATORS

#### *Isolators With Gold-Plated Terminals*

ProMariner Battery Isolators with gold-plated terminals and improved efficiency, provide enhanced charging. Rated for use with DC devices ranging from 10 amps to 130 amps





## WIRE AND WIRE MANAGEMENT ANCOR

### MARINE WIRE & MANAGEMENT

#### *Electrical Solutions for Harsh Environments*

For over 40 years, Ancor has been the market leader in Marine Grade® wire and wire management tools.

All Ancor products are built for the harsh marine environment and conform to industry standards.

Ancor is your source for all of your marine and mobile electrical projects.



### WIRE & CABLE

#### *Built For The Harsh Marine Environment*

ABYC recommended colors in a variety of sizes to handle any wiring project.

- Shore Power Cord
- Battery Cable
- Coaxial Cable
- Primary Audio Cable
- Multi-conductor Cable & Assemblies



### HEAT SHRINK TERMINALS

#### *Marine Grade Terminals & Connectors*

- Ring Terminals
- Spade Terminals
- Battery Terminals
- Butt Connectors
- Disconnects
- Heavy Duty Lugs
- Terminal Kits



### WIRE MANAGEMENT

#### *Wire Management Solutions*

- Heat Shrink Tubing & Accessories
- Cable Ties
- Electrical Tape
- Self-sealing Repair Tape



## NMEA NETWORK & VESSEL MONITORING ACTISENSE

### MARINE NETWORK TECHNOLOGY

#### Intelligent Sensors & Interfaces (NMEA)

Making your voyage safer by giving you greater control of data on your vessel's network.

Intelligent sensors, interfaces and technology that are unrivalled for their quality, features and reliability.

- Marine Leisure
- Marine Pro
- Agritech



## VESSEL MONITORING & CONTROL SYSTEMS MARETRON

### MONITORING & CONTROL

#### Common Interface To Monitor & Control

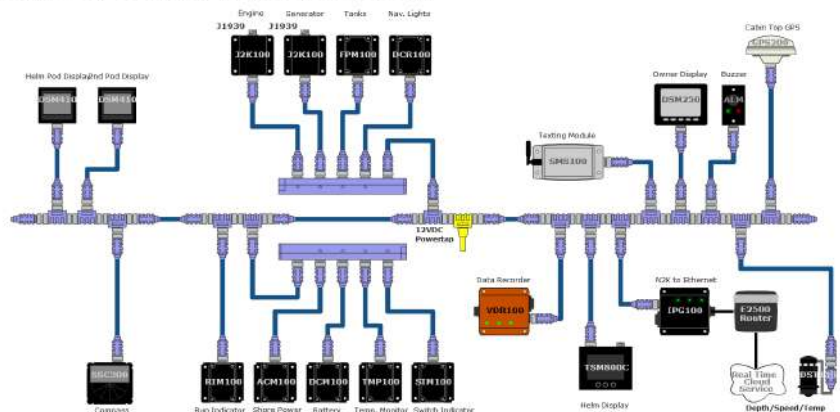
**Safety** – Alarms for fire, smoke carbon monoxide & high bilge water.

**Security** – Includes cameras, motion detectors & door / port hole sensors

**Ease of use** – Provides one simple, common user interface for all systems

**Remote monitoring and notification** – Includes monitoring remotely plus video, email & text notifications.

#### Sailboat Comprehensive System





## TRIM TABS & ELECTRIC ACTUATORS

### LENCO

### TRIM TABS & ELECTRIC ACTUATORS

#### *The Most Advanced Trim Tabs & Actuators*

Complete your trim tab system with the latest tactile switch technology - waterproof, maintenance free and easy to install. The most advanced trim tab switches available in today's market.

Instant response electric actuators are made of high impact glass fiber filled, ultraviolet-resistant nylon material with 316 super buff stainless steel tubing.



## MARINE & AMOURED CABLE

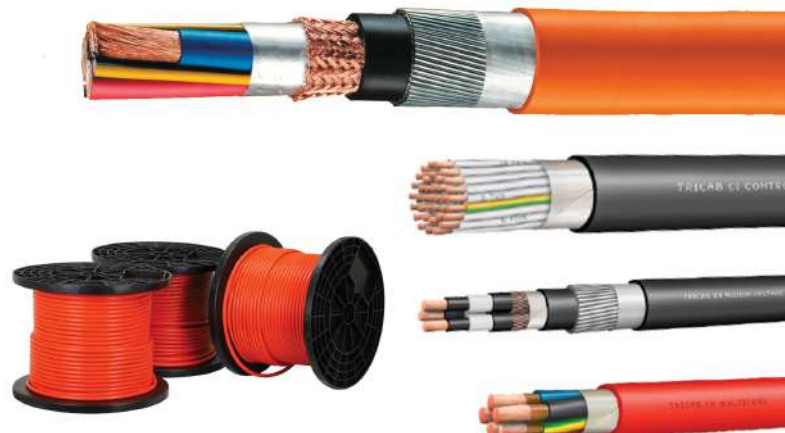
### TRICAB

### CUSTOM MANUFACTURED CABLE

#### *The World's Most Flexible Cable*

Tricab Group is a global innovator and manufacturer of electrical cables with over 35 years experience in the specialist cables and cables solutions market.

Whether you require a Lloyd's approved large multicore cable for an offshore platform or a very small Low Smoke, Halogen Free flexible cable for a small passenger vessel, we can provide the solution.







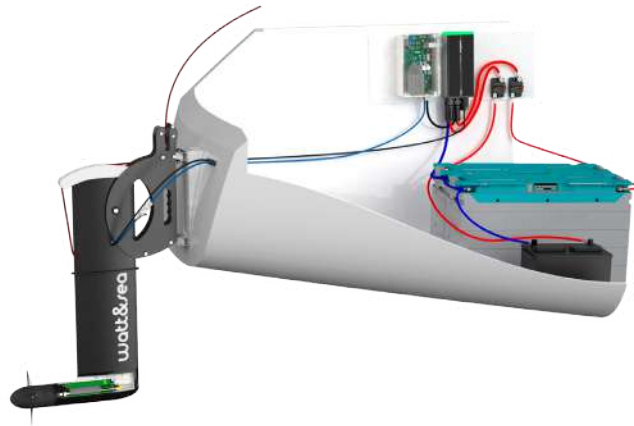
## HYDROGENERATORS WATT&SEA

### HYDROGENERATORS

#### *Energy Self-Sufficiency Solution*

A good management of the energy on board is the key point to sail in total serenity, regardless the consumption of the on-board electronics or other electrical appliances.

Watt&Sea's hydrogenerators propose an energy self-sufficiency solution on board of cruise or race boats, in the respect of the environment.



## SATELLITE COMMUNICATIONS LARS THRANE

### GMDSS SATCOM SYSTEMS

#### *Distress Alert, Safety Voice & MSI*

The LT-3100S GMDSS system is designed for all IMO vessels and will be an alternative to the Inmarsat C.

The LT-3100S GMDSS system meets all standards and certification requirements needed for worldwide maritime satellite communications equipment (MED, Wheelmark).





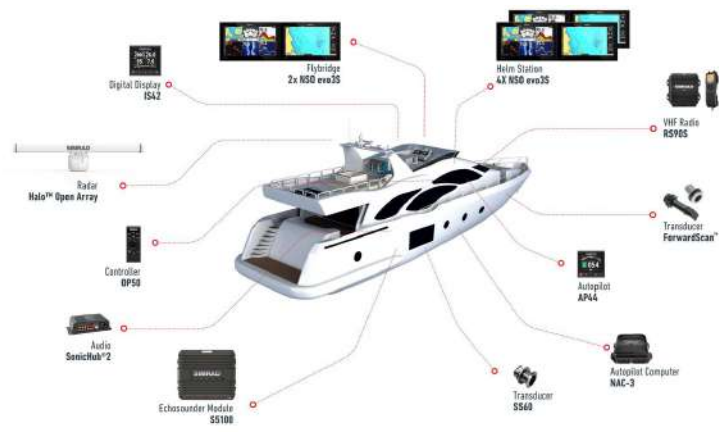
# POWER BOAT MARINE ELECTRONICS SIMRAD

## POWERBOAT & SPORTFISHING

### Leading For More Than 60 Years

Simrad's range covers recreational vessels of all sizes, from small runabouts and Sportfishing vessels up to luxury cruisers and superyachts.

Simrad offers a range of sophisticated auto steering, navigation and safety products for vessels of all sizes, from small vessels on inland waterways to larger coastal commercial and passenger craft.



## MARINE NAVIGATION

### Take Control Of Your On-Water Experience

Simrad multifunction displays combine powerful fish-finding sonar technology with the chartplotter navigation features you need to plan trips and find your way on the water.

Our fishfinders offer dedicated sonar displays, perfect for amateur anglers and offshore sportfishing pros.

## HALO, 3G & 4G RADAR

### See Near and Far

Our revolutionary HALO pulse compression dome radars deliver industry-leading 360-degree sweeps every second at close range, for the ultimate in collision avoidance of stationary and fast-moving targets. With high-quality short, mid and long-range detection, these feature-packed dome antennas ensure targets can be seen vividly - even in the toughest environmental conditions.

## MARINE COMMUNICATIONS

### VHF Radio & AIS

Hear and be heard with the latest equipment from Simrad.

- Class D DSC Approved VHF Radios
- Built-in GPS
- Integrated Class B AIS Transceivers



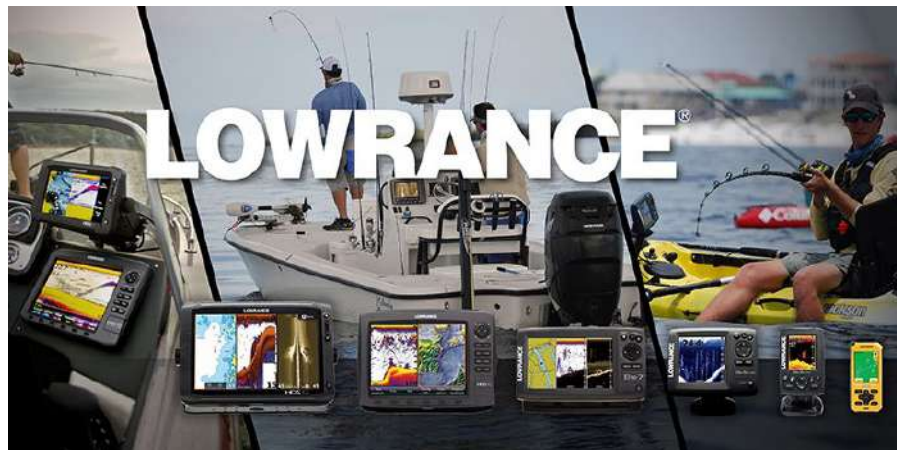
## FISHING MARINE ELECTRONICS **LOWRANCE**

---

### FISHING MARINE ELECTRONICS

#### *Over 60 Years of Electronics Technology*

Lowrance invented fishing technology 60 years ago and continues to refine electronics equipment and applications today. CHIRP Sonar provides the best in underwater imaging, both downward and to the sides. Touch-screen technology with ultra fast data processing allows easy configurations on the high-resolution LED backlit color displays.



### FISHFINDERS / CHARTPLOTTERS

#### *The World's Best-Selling Fishfinders*

The world's best fish finding sonar with powerful navigation performance you can count on.

- HDS Live
- Elite
- Hook Reveal



### RADAR, SONAR & TRANSDUCERS

#### *Safer Navigation With Lowrance*

From single-frequency Broadband Sounder™ technology to the three-dimensional images of StructureScan® 3D, Lowrance offers something for every angler, on any budget.

Lowrance's line of Marine Radars gives you the clearest picture of the surroundings for safe navigation in conditions of limited visibility.



### VHF & AIS

#### *Reduce Risk of Collision with Lowrance*

Maintain water awareness with Lowrance VHF and AIS technology on your boat.

Whether fixed-mounted or handheld, VHF radios are one of the most important communication and safety devices for anglers and boaters.



# SAILING MARINE ELECTRONICS

**B&G**

## FOR CRUISING & RACING

### *Passionate About Sailing*

B&G has been at the cutting edge of sailing innovation for 50 years. Whether you're motivated by the thrill of your next race or a passion for cruising, our electronics are designed for you.

Our racing heritage gives us an unrivalled platform for developing new technology, which is put through its paces by the



## SAILING NAVIGATION

### *Chartplotters, Radar & Transducers*

B&G's award-winning sailing chartplotters enhance your time on the water.

Benefit from high-accuracy GPS and the best marine charts.

Network with Radar, AIS and wind, depth and speed transducers for the ultimate marine navigation system for sailors.

## INSTRUMENTS & AUTOPILOTS

### *Instruments For Every Sailor*

Sailing instruments do not replace a sailor's natural senses, but they enhance and validate them ensuring that you are prepared and informed when out on the water. Whether you require basic instrumentation for cruising or an advanced system for offshore racing, B&G's instrument range has an option to suit every sailor.

## VHF & AIS

### *For Safety On The Water*

Stay connected with B&G's range of VHF and AIS products.

Whether you're looking for a fixed mount system at the chart table or a flexible handheld VHF, B&G offer a choice of sailing VHF radios. For a fully integrated navigation and safety system, add AIS to your marine electronics system.





## MULTIBEAM SOUNDER WASSP

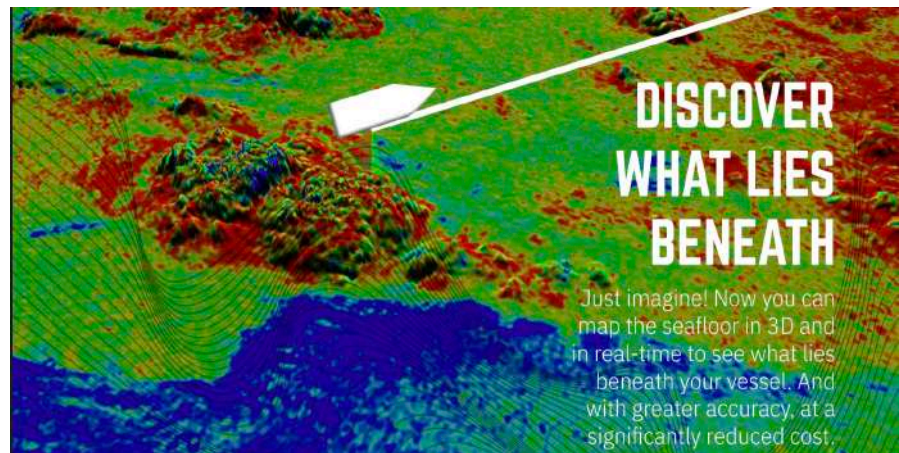
---

### MULTIBEAM TECHNOLOGY

#### *Discover What Lies Beneath*

The new standard in multibeam sounder technology.

WASSP multibeam sounder gives you a wide-angle 120° port-to-starboard view of the seafloor and water column. The viewing span is over 3 times sea depth, and WASSP can profile an area more than 100 times faster than a single beam system.



## FORWARD LOOKING SONAR ECHOPILOT

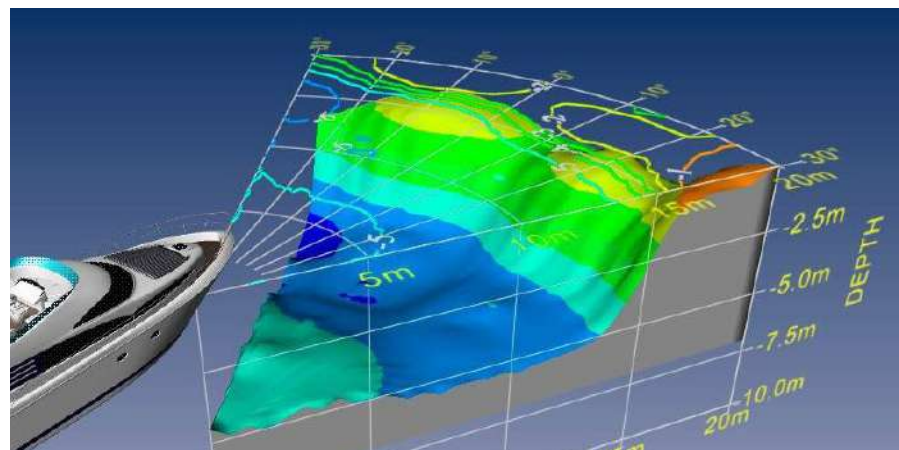
---

### FORWARD LOOKING SONAR

#### *Enhance Vessel Safety*

Forward Looking Sonars (FLS) are aimed to enhance the vessel's safety in uncharted waters and remote areas by scanning and displaying the seabed in front of the vessel.

EchoPilot patented the world's first real time FLS in 1992. In 2012, EchoPilot developed and patented the 3D forward sonar product.





## ELECTRONIC CHARTS **C-MAP**

---

### C-MAP CARTOGRAPHY

#### *Electronic Charts*

C-MAP serves boaters worldwide, providing cartography products and services for all types of leisure boaters, from fishermen and sailing enthusiasts to powerboat owners.

C-Map provides cartography to the best marine electronics manufacturers including B&G, Lowrance, Simrad, Raymarine, Furuno & Humminbird.



## VHF | AIS | SMARTAIS **VESPERMARINE**

---

### SMART AIS TRANSPONDERS

#### *Powered By smartAIS Technology*

Vesper Marine is dedicated to safety on the water for sail, power and work boats.

Vespermarine's award-winning collision avoidance AIS transponders are designed by the Vesper Marine engineering team with an unwavering focus on quality, exceptional value and outstanding customer support.





## VESSEL MONITORING & CONTROL **NAVIOP**

---

### TAKE CONTROL AT THE HELM

#### *Naviop LOOP Range*

Designed to meet several needs of monitoring and control, each customer can configure and customize easily and quickly his own monitoring system choosing his preferred monitoring pages.

NAVIOP System is the most highly versatile, flexible and marine oriented system that can be adapted to any type of boat for maximum personalization, to meet very high comfort and security levels.



## ON BOARD NETWORK SOLUTIONS **PEPLINK**

---

### YACHT WI-FI CONNECTIVITY

#### *On Board Cellular Network Solutions*

Peplink set out to create the most reliable and easiest-to-use routers.

Use Peplink to combine 4G LTE, 3G and VSAT connections, ensuring that your clients have high-quality Wi-Fi Internet access wherever their journeys take them. PoE support simplifies each deployment.





## SATELLITE COMMUNICATIONS

**KVH**

### SATELLITE COMMUNICATIONS

#### *World's No. 1 Choice to Keep You Connected*

Connectivity at sea designed for the way you use the Internet today.

Whether you're relaxing at anchor or cruising offshore in choppy seas, KVH helps you stay connected, entertained, and on course so you can enjoy life on your boat the way you do on shore.



### VSAT SOLUTIONS

#### *TracPhone & mini-VSAT Broadband*

Our NMEA award-winning TracPhone VSAT systems enable you to enjoy the fastest, most reliable connectivity at sea. Experience speeds as fast as 20 Mbps worldwide, take advantage of the flexibility offered by our affordable month-to-month airtime subscriptions, and rely on our powerful value-added services.



### LTE SOLUTIONS

#### *TracPhone LTE-1*

TracPhone LTE-1 simply gives you what you want when you're cruising... and more of it, with more data speed thanks to LTE-A technology, more range (service as far as 20+ miles offshore), and coverage from leading U.S. carriers. With an affordable data plan, now you can do more on the Internet in U.S. waters, whether at the dock or offshore.



### SATELLITE TV SYSTEMS

#### *TracVision® Satellite TV systems*

Award-winning Satellite TV Systems.

Enjoy a premium viewing experience onboard with an award-winning TracVision® satellite TV system for every size boat. Bring the television shows you love on the water in the best way possible – with sophisticated technology that's simple to use.





## THERMAL IMAGING SYSTEMS

# FLIR

### THERMAL IMAGING SYSTEMS

#### *Nighttime on the Water Made Safer*

FLIR Maritime thermal imaging systems give you the power to see clearly in total darkness, through solar glare, and through light fog and smoke. FLIR's thermal technology is used by thousands of military, first responder, commercial and recreational mariners every day for navigation, collision avoidance, threat detection, surveillance, and search and rescue missions.



### FIXED MOUNT CAMERAS

#### *Advanced Thermal Night Vision*

Navigate quickly and safely through total darkness and unpredictable waters when lives are on the line.

Gain clear tactical awareness when observing potential dangers and avoid unexpected obstacles when responding to emergencies.

### HANDHELD THERMAL CAMERAS

#### *Nighttime on the Water Made Safer*

Precise, easy-to-use, and reliable, explore your adventurous spirit with FLIR's thermal night vision cameras.

Whether fishing, cruising, sailing, or just exploring the ocean, remove limitations and enjoy a sense of personal freedom with the same advanced technology used by professional mariners.

### THERMAL MONITORING SYSTEM

#### *Monitoring Of Critical Equipment Onboard*

The FLIR AX8 thermal monitoring camera watches critical equipment on your vessel, including engines, exhaust manifolds, and shaft bearings, to spot problems before you're stranded on the water.



## MARINE, LAND & DATA ANTENNAS **PACIFIC AERIALS**

### VHF, AIS, CELLULAR, HF/SSB

#### *Stay In Touch Wherever You Are*

Antennas and mount for marine, land and data.

- VHF
- AIS
- Cellular
- HF/SSB
- AM/FM
- TV
- CB/UHFCB
- IOT
- SCADA



## MARINE COMMUNICATIONS **SCAN ANTENNA**

### VHF, 3G, 4G & 5G ANTENNAS

#### *Lives Depend On Staying Connected*

Scan Antenna offer a wide selection of VHF antennas and also antennas for 3G/4G/5G connectivity to shore. All designed for a lifetime at sea.

People's lives depend on staying connected, with both receiving and transmitting performance being critical.



## MOUNTING SOLUTIONS

### *First Choice For Boat Owners*

Scanstrut products are expertly designed to maximise the performance of your marine electronics.

Scanstrut offer a standard range of over 100 different installation products to mount radar, satcom, GPS, VHF and nav lights onto yachts, powerboats, commercial and military vessels.



## MARINE ELECTRICAL MOUNTS

### *Space Saving Mounting Solutions*

- Camera Mounts
- GPS Mounts
- Mast Mounts
- Pole Mounts
- Satcom Mounts
- Radar Mounts
- Tapered Masts

## SCAN PODS

### *Compatible With All Major Brands.*

- Helm Multi-function Pods
- Deck Instrument Pods
- Rail Instrument Pods
- Arm Instrument Pods
- Mast Instrument Pods

## SCANSTRUT ACCESSORIES

### *Guaranteed Watertight Installation*

- Deck Mounts
- Rook Mounts
- Waterproof USB Charge Sockets
- Waterproof Wireless Chargers



## MARINE GENERATORS FISCHER PANDA

---

### MARINE GENERATORS

#### *Compact, Light & Quiet*

Fischer Panda marine generators are the ideal choice for professional sailing and boating. Fischer Panda marine generators are compact, light, quiet and very efficient.

The generating set is housed within a sound insulated capsule which shields against operational noise and vibration. When correctly installed they will operate practically unnoticed.



### POWER - WHEREVER YOU ARE

#### *Fischer Panda Generator Range*

- Generator systems from 3 kW to 200 kW
- Worldwide partners
- Very low vibration & quiet installation
- Up to 40 % weight & 60 % space savings
- Parallel operation with multiple generators
- Integration with yacht's main control systems

### I SERIES GENERATORS

#### *"Perfect Power" iSeries Generators*

The Panda iSeries generators have been especially designed to be compact, quiet and powerful with up to 30 % weight and space savings!

They are ideal for yacht owners looking for a night generator with low operating sound levels and vibrations.

### X SERIES GENERATORS

#### *"Compact Power" Generators*

Suitable for applications requiring continuous power and high starting capabilities with a very stable voltage supply.





## SOLAR PANELS & REGULATORS **SUNWARE**

### ENERGY EVERYWHERE

#### *Solar Panels - Leisure & Professional Use*

SunWare solar panels are designed and manufactured for extreme conditions. From application to avalanche bridges to sea buoys.

SunWare solar modules are used all over the world where reliability, maintenance free and robustness are essential.



### ULTRA SLIM WALKABLE PANELS

#### *Customisable To Decks*

Solar Panels Series-20 walkable flat deck mounting.

- Powerful
- Extremely Robust
- Salt Water Resistant

For 12V and 24V, without sharp edges only one connection cable, perfect for deck, sliding hatch and hardtop.



### SOLAR CHARGE CONTROLLERS

#### *Reliable, Safe & Durable*

FOX solar charge controller have proven themselves for almost 30 years.

Due to the combination of sophisticated technology and robust components, FOX charge controller are very reliable, safe and durable.



### OEM & CUSTOM PANELS

#### *For Special Applications*

SunWare provides the opportunity for customized panels.

The system design is carried out in close cooperation with the customer.

The panel can be adapted both in form and color as well as in the mechanical design requirements.

**LED LIGHTING**

***Fit & Forget Lighting Solutions***

Hella Marine lighting solutions are engineered for energy efficiency, safety and reliability.

Hella marine lamps are 'Fit and Forget' by design, offering complete piece of mind and enduring Safety at Sea.

**All LED lighting products carry a 5 Year Warranty.**



**NAVIGATION LED LIGHTS**

***Port, Starboard, Anchor, Stern & Masthead***

Ultra durable, power saving LED navigation lamps for enhanced safety.

NaviLED lamps are proven worldwide on commercial, military and recreational vessels.



**FLOOD & WORK LIGHTS**

***Designed For Harsh Environments***

- UV, corrosion and impact resistant
- Completely sealed IP67
- Pre-wired with marine cable
- Multivolt 12/24V DC
- Made in New Zealand
- 5 year warranty



**INTERIOR & EXTERIOR LIGHTS**

***EuroLED & DuraLED***

EuroLED lights combine the latest in style, functionality and performance.

The smooth diffused lens creates a comfortable and uniform appearance, while high output LEDs produce a broad and even illumination.



## UNDERWATER LED LIGHTS **OCEAN LED**

---

### UNDERWATER LED LIGHTS

#### *Light Years Ahead*

OceanLED is the UK-based company that started the marine LED revolution back in 2005 and is still to this day changing how boat owners light up the night.

- Superyachts
- Leisure Vessels
- Fishing Vessels
- Dock Lighting



#### **X-SERIES**

##### *Above or Below Water Mounting*

With a wide choice of sizes and colours, the X-Series offers a range of mounting and colour options to help create your perfect light show and enjoy more time on the water.

Colour Options:

- Ultra White
- Midnight Blue
- Multi-Colour



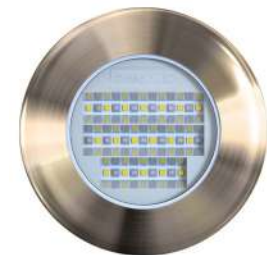
#### **SPORT SERIES**

##### *Vessel & Dock Mount Options*

OceanLED Sport Series underwater led lights are perfect for fishing and cruising in small and medium sized boats.

Colour Options:

- Ultra White
- Midnight Blue
- Midnight Blue / Ultra White
- Multi-Colour



#### **EXPLORE SERIES**

##### *Xchangeable Flush Mount Body*

The Explore Series packs powerful fixture lumens into a low profile, Xchangeable Flush Mount body.

Colour Options:

- Midnight Blue
- Ultra White
- Dual Blue/White
- RGBW



## MARINE AUDIO ENTERTAINMENT **FUSION**

### MARINE AUDIO ENTERTAINMENT

#### *The New Benchmark For Marine Audio*

Fusion is passionate about enhancing your time on the water. Fusion's determination to continually innovate has brought the integration of touchscreens to marine stereos, along with Wi-Fi audio streaming, Apple AirPlay® 2, PartyBus™ and advanced Digital Signal Processing.

Fusion has yet again set a new benchmark for marine audio entertainment.



### STEREO UNITS

#### *Bluetooth, Wi-Fi Audio, IPX7 & 280 Watt*

Designed for marine use, Fusion's water resistant, true-marine stereo units with FUSION-Link have been setting the benchmark for marine entertainment since 2005.

- True-Marine Design
- Fusion-Link App
- Multi-Zone Technology

### SPEAKERS & SUBWOOFERS

#### *Designed For Harsh Marine Environments*

Pushing the boundaries of what is possible on the water.

Fusion's marine speakers are designed to provide unparalleled performance even when exposed to the harshest marine conditions.

### AMPLIFIERS

#### *Marinised 2 - 8 Channel Amplifiers*

Fusion Signature Series amplifiers are purpose-built for the marine environment.

Boasting some of the most impressive environmental protection available, they deliver a Signature performance on the water like never before.





## MARINE REFRIGERATION **FRIGOBOAT**

---

### MARINE REFRIGERATION

#### *Refrigeration Systems & Cabinets*

From more than 40 years, the brand FRIGOBOAT represents the excellence in the marine refrigeration, with a wide range of systems.

From DC models suitable from 50 to 400 liters, up to 230V models suitable for large cold rooms; standard and custom stainless steel fridge, freezers and wine cellars, ice makers and completely customized cold rooms.



## MARINE AIR CONDITIONING **CLIMMA**

---

### MARINE AIR CONDITIONING

#### *Independent & Centralized Systems*

CLIMMA represents the state of the art of the marine air-conditioning.

From small independent units to customized, centralized chiller systems, fancoils, mistifiers, fresh air make-up units, boilers and air extractors, to manage at 360° the comfort on board conditions.





## MARINE WATERMAKERS **SPECTRA**

### MARINE WATERMAKERS

#### *Easiest To Use Water Makers In The World*

Connectivity at sea designed for the way you use the Internet today.

Whether you're relaxing at anchor or cruising offshore in choppy seas, KVH helps you stay connected, entertained, and on course so you can enjoy life on your boat the way you do on shore.



#### **POWERED - AUTOMATED**

##### *Fully Automated, High Delivery Systems*

The Newport 400c Compact operates on as little as 15 watts per gallon (4 watts per liter), making it possible to run your system on a small generator, solar, wind, batteries. Multi-speed capacity allows machine operation on high mode for maximum product flow or low mode for maximum efficiency, making it ideal for onboard power management.



#### **POWERED - ANALOG**

##### *The Worlds Smallest Electric Watermaker*

The PowerSurvivor 40E is compact and energy efficient, drawing only 4 amps to desalinate water for your yacht.

It's simple construction and rugged design make the 40E easy to operate, and maintain. With its space-saving design, it can be fit in the smallest compartments.



#### **HAND OPERATED**

##### *Survivor 35*

The most widely-used emergency desalinator. This desalinator produces up to 4.5 litres per hour. That's enough water for multiple person liferafts.

At only 3 kg / 7 lbs, it's light enough to carry aboard any vessel. Designed for 7 - 20 people in emergency situations.



Dealer Partner for Marine Special Projects

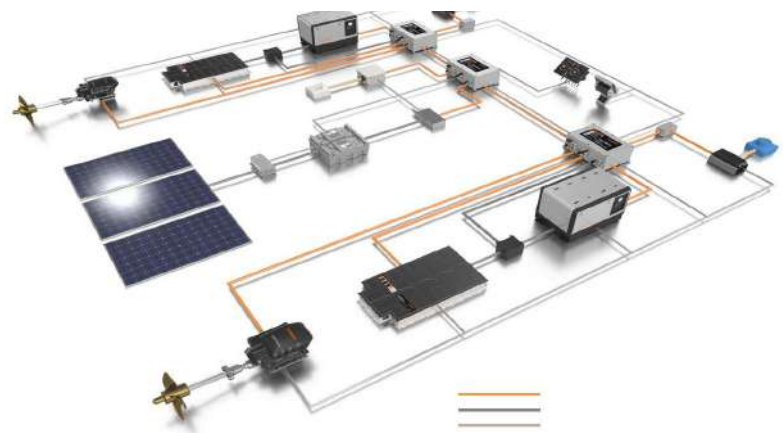
# ELECTRIC PROPULSION MOTORS TORQEEDO

## ELECTRIC BOAT MOTORS

### *For Sailing & Motor Boats*

Torqeedo's superior electric motors are suitable for powerful motorboats, large sailing yachts and commercial vessels such as ferries.

With up to 100 kW the high-RPM version easily powers planing boats, while the low-RPM version is ideal for large yachts and other displacement vessels.



## ELECTRIC OUTBOARDS

### *Quietly Efficient High-Tech Outboards*

Electric outboard motors driving technology that is clean and state-of-the-art.

- Superior efficiency and performance.
- Convenience and value.
- Clean mobility.
- Plug & play solutions.

## ELECTRIC INBOARDS

### *Deep Blue For Boats With Direct Drive*

Deep Blue: A fully integrated high-performance system for propulsion and energy management.

More powerful motors and batteries open up new possibilities.

25 - 100 kW for sailing & power boats.

## ELECTRIC POD DRIVES

### *Cruise Pod Drives*

Inconspicuous yet powerful, the new Cruise pod models offer high-tech propulsion in the 5 to 20 HP performance class.

Suitable for motorboats or sailboats up to 10 tons.

## ELECTRIC PROPULSION SYSTEMS

### *E-Propulsion In Motion*

Bellmarine is a Dutch brand and historical leader in electric marine propulsion and more.

Electrical and hybrid solutions suitable for any type of boat or industrial vehicle, covering a unique range of powers worldwide.



## MARINE TRANSMISSION

### *Marine & Shipbuilding Applications*

Transfluid S.p.A., an Italian company, has been manufacturing power transmission products for over 60 years.

Transfluid has developed a complete range of hybrid propulsion systems and produces permanent magnet electric machinery.





## ANCHORS, SWIVELS & HOOKS

### *Safety, Quality & Experience*

Ultra Anchor outstanding design demonstrates, why a correct weight distribution is so important when setting and recovering anchor.

In fact, invert any ULTRA Anchor and it will instantly recover itself to the attack position.



## 316 STAINLESS STEEL ANCHORS

### *Worlds No.1 Anchor*

Hand-made from 316 stainless steel and hand polished.

- Sail boat & Power Boat
- 5KG up to 200KG Anchors
- Maximum holding power
- Drop it, set it, forget it

## FLIP SWIVEL & HOOK

### *Anchor Always In The Right Position*

Well known swivel, a small part in complete anchoring system, but big factor in success of the whole anchor roll up process.

Our unique design assures your boat's no damage, safe anchor's operation and easy recovering on the bow roller.

## ANCHOR RING

### *Emergency Anchor Recovery*

Ultra Anchor Ring used as an anchor retrieval and recovery tool to free the anchor in necessary conditions.

Ultra Anchor Ring permits shorter scope by reducing the chain length in cases of limited anchorage area and increases safety by adding weight to the anchoring system.



# OBMG

**Phone**

(+852) 2552 6568

**Email**

[info@obmghk.com](mailto:info@obmghk.com)

**Website**

[www.obmghk.com](http://www.obmghk.com)

**Online Store**

[www.obmgonline.com](http://www.obmgonline.com)

**Address**

21 D E Tat Factory Building, 4 Heung Yip Road, Wong Chuk Hang, Hong Kong